

GHOST SONATA

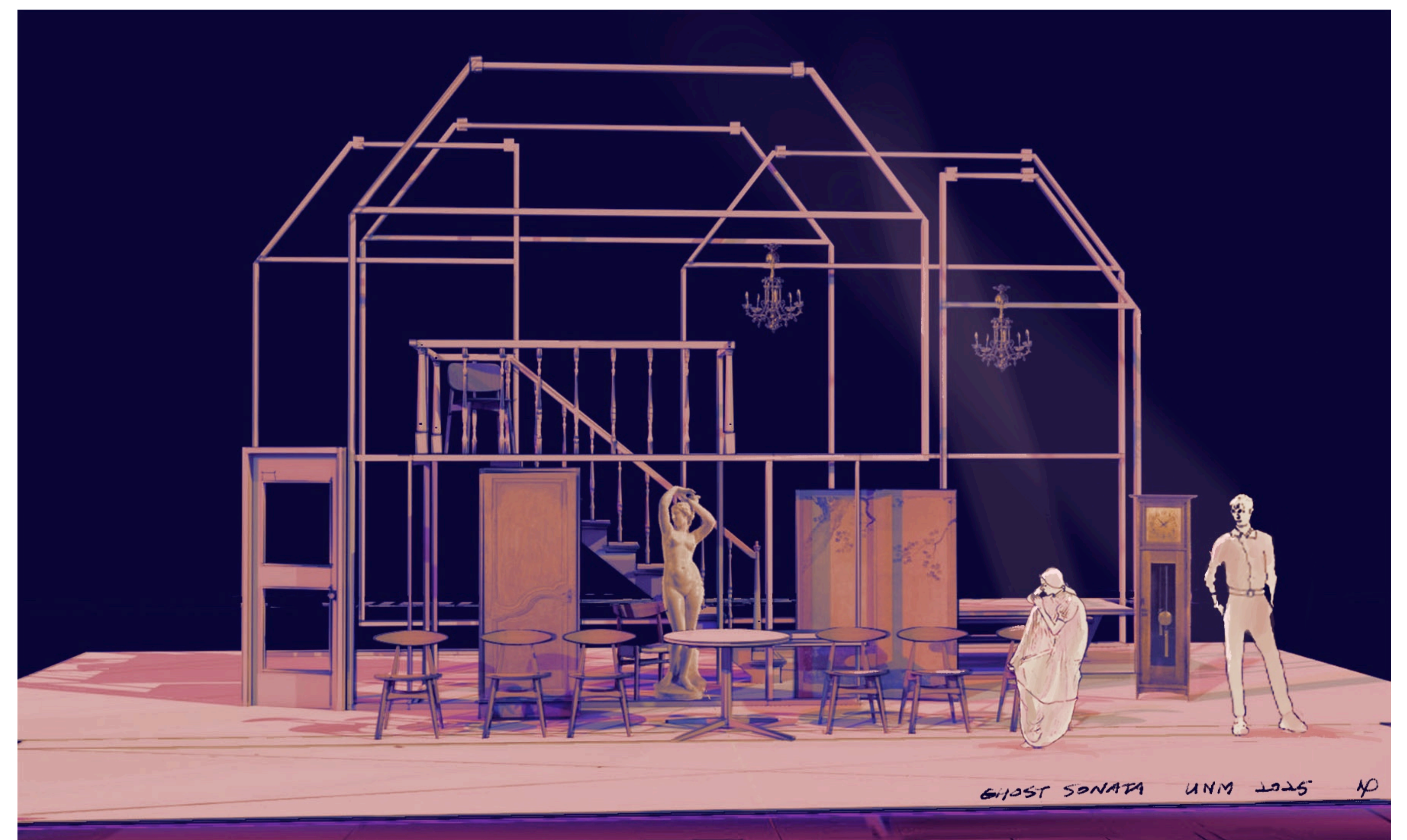
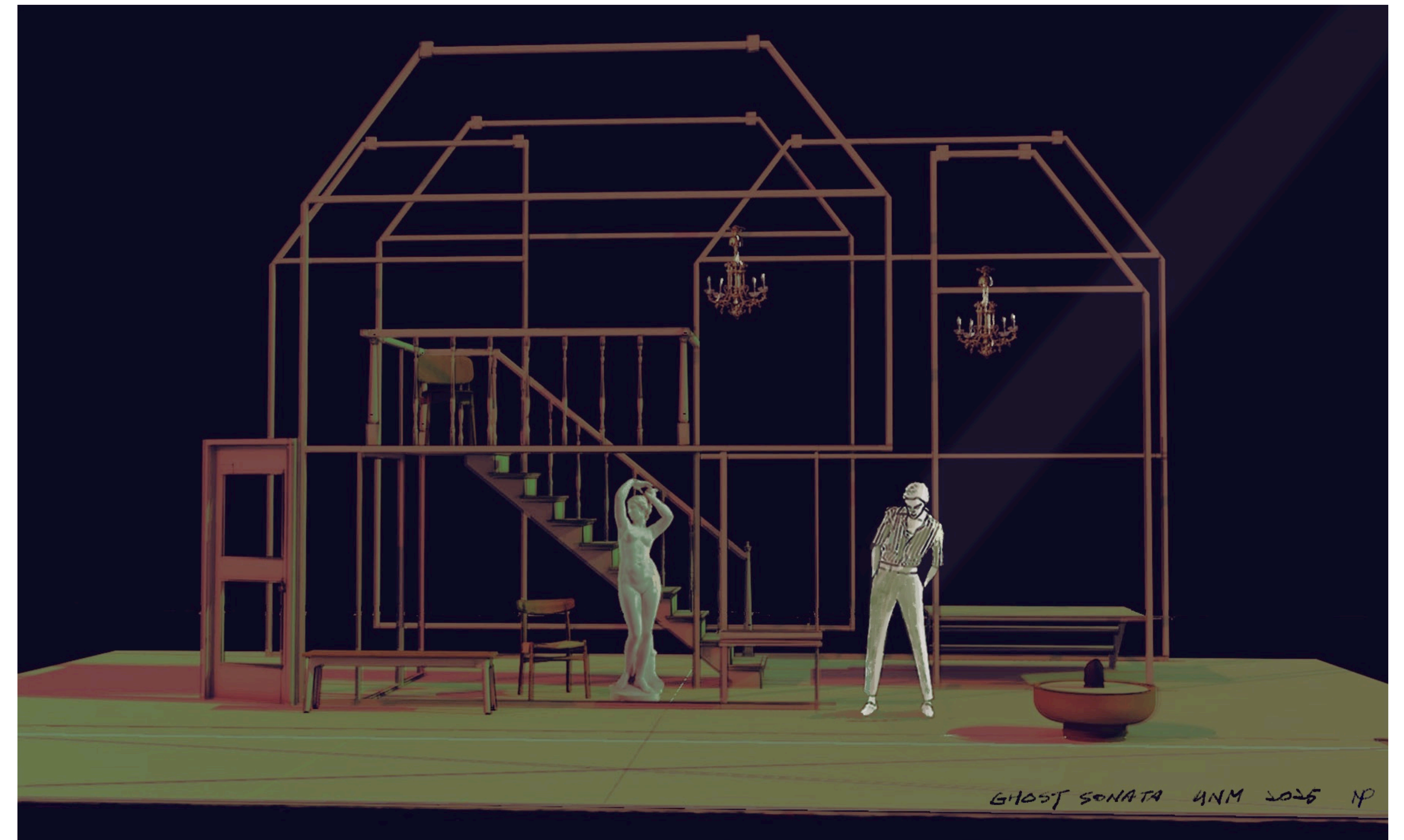
By August Strindberg

University of New Mexico, Rodety Theatre, 2025

Directing Alejandro Rodriguez
Scenic Design & Draft Inseung Park

Scenic Package

- 1-1. Ground plan - scene 1
- 1-2. Ground plan - scene 2
- 2. Section
- 3. Balcony unit
- 4. Ghost level
- 5. Ghost house

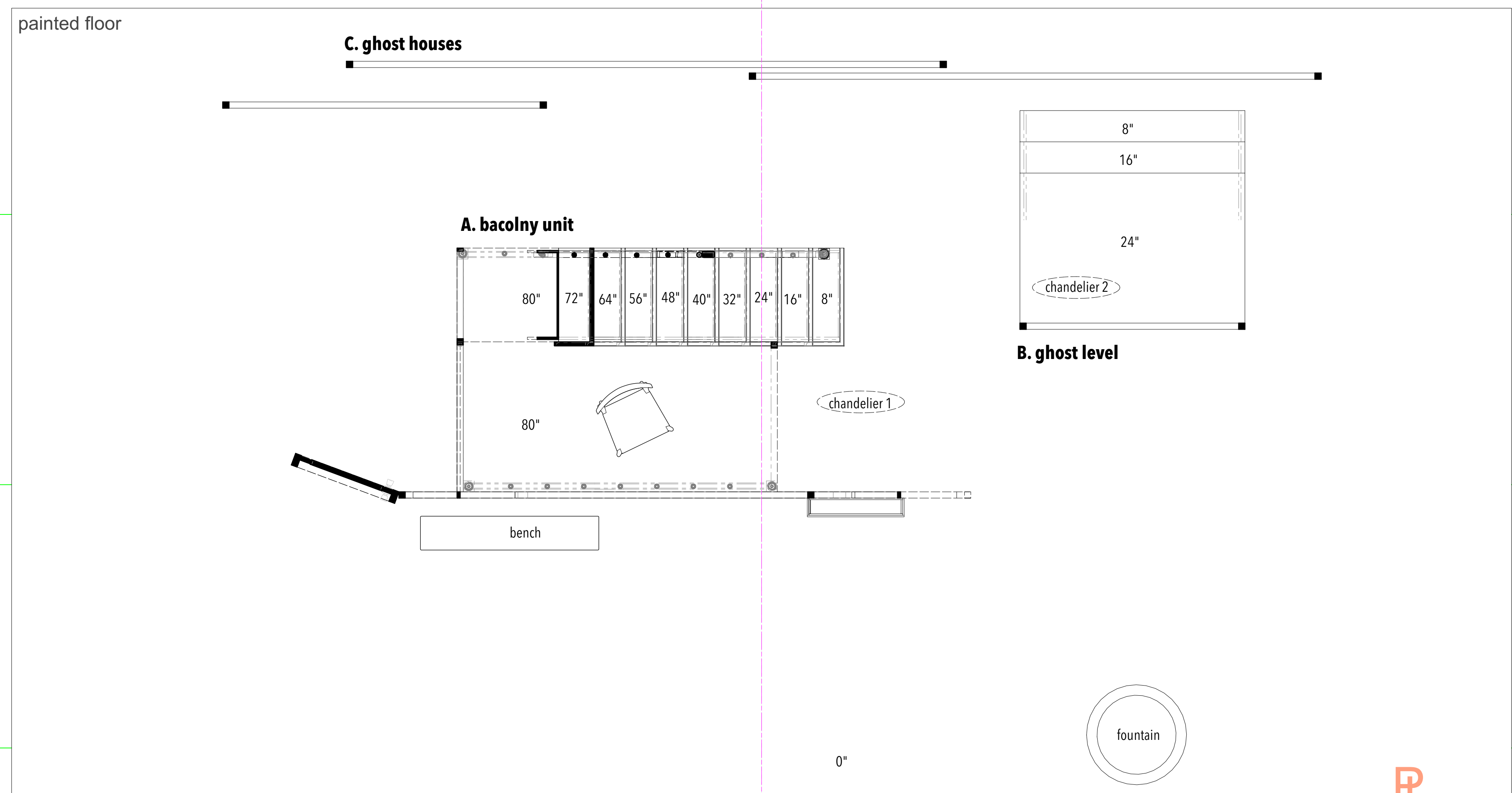


Ghost Sonata
by August Strindberg

Ground plan:
Horizontal section at 6' high
- solid line: extends below cut plane
- dashed line: extends above cut plane
- cutting plane indicated with black fill

NOTE:
- The floor is painted in high gloss black.

- 28 - 5th Elec
- 27 - RP screen
- 26 - black scrim
- 25 - Leg #5
- 24 - Black Trav
- 23 - Leg #4
- 22 - 4th Elec
- 21 - Legs #3
- 20 - Border #3
- 19 - chandelier 2
- 18 - 3rd Elec
- 17 - chandelier 1
- 16 - Track storage
- 15 - Legs #2
- 14 - Border #2
- 13 - 2nd Elec
- 12 - 1st Electric
- 11 - Movie Screen
- 10 - Grand Curtain
- 9 - Border Leg
- 8 - Fire Curtain



Directing: Alejandro Rodriguez
Costume: Sydney Liotta
Lighting: Bill Liotta
Sound: Bill Liotta
Prop/scenic charge: Mattie Roos
Technical Directing: Jeff Taylor
Assistant tech directing: Alex Houston
Scenic: Inseung Park
Assistant Scenic: Kay Burley
Drafting: Inseung Park

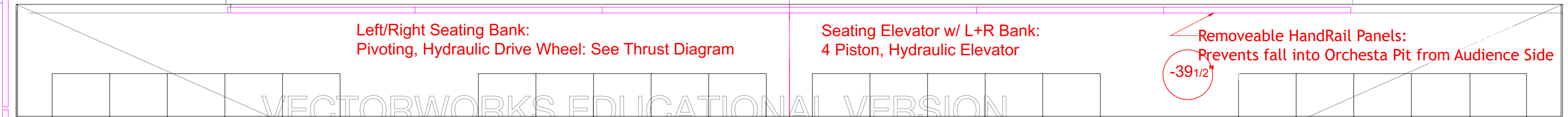
University of New Mexico
Rodey Theatre

Section - scene 1

Scale: 1/2" = 1'-0"

Date: Feb, 17, 2025

- 123" Pit/Trap Room Level
- 71 1/2" Orchestra Level
- +0" Stage Level



S.D. 13829
SCENIC DESIGNER
SIGNATURE: *[Signature]*

Ghost Sonata
by August Strindberg

Directing: Alejandro Rodriguez
Costume: Sydney Liotta
Lighting: Bill Liotta
Sound: Bill Liotta
Prop/scenic charge: Mattie Roos
Technical Directing: Jeff Taylor
Assistant tech directing: Alex Houston
Scenic: Inseung Park
Assistant Scenic: Kay Burley
Drafting: Inseung Park

University of New Mexico
Rodey Theatre

Section - scene 2

Scale: 1/2"=1'-0"

Date: Feb, 17, 2025

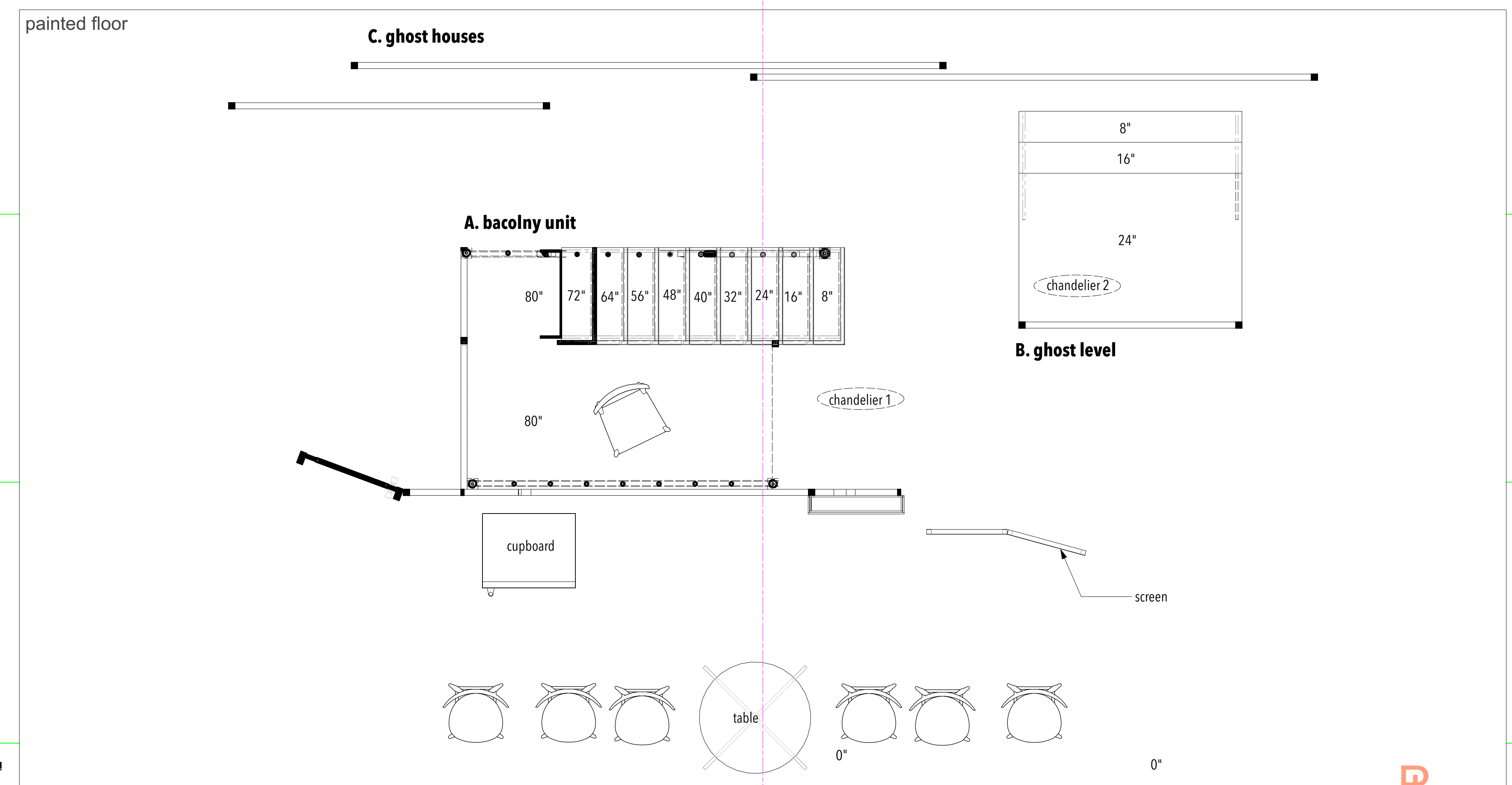


S.D. 13829
SCENIC DESIGNER
SIGNATURE *[Signature]*

1-2

Ground plan:
Horizontal section at 6' high
- solid line: extents below cut plane
- dashed line: extents above cut plane
- cutting plane indicated with black fill

- 28 - 5th Elec
- 27 -
- 26 - RP screen
- 25 -
- 24 - black scrim
- 23 - Leg #5
- 22 - Black Trav
- 21 -
- winch 2 - 4th Elec
- 20 - Legs #4
- 19 - Border #4
- 18 -
- 17 -
- 16 - 3rd Elec
- 15 -
- 14 - Legs #3
- 13 - Border #3
- 12 - chandelier 2
- 11 -
- 10 - 2nd Elec
- 9 - chandelier 1
- 8 - Track storage
- 7 - Legs #2
- 6 - Border #2
- 5 -
- 4 -
- Winch 1 - 1st Electric
- 3 - Movie Screen
- 2 - Grand Curtain
- 1 - Border Leg
- 0 - Fire Curtain



- 123" Pit/Trap Room Level
- 71 1/2" Orchestra Level
- ± 0" Stage Level

Left/Right Seating Bank:
Pivoting, Hydraulic Drive Wheel: See Thrust Diagram

Seating Elevator w/ L+R Bank:
4 Piston, Hydraulic Elevator

Removeable HandRail Panels:
Prevents fall into Orchesta Pit from Audience Side
-39 1/2"

Ghost Sonata

by August Strindberg

Directing: Alejandro Rodriguez
Costume: Sydney Liotta
Lighting: Bill Liotta
Sound: Bill Liotta
Prop/scenic charge: Mattie Roos
Technical Directing: Jeff Taylor
Assistant tech directing: Alex Houston
Scenic: Inseung Park
Assistant Scenic: Kay Burley
Drafting: Inseung Park

University of New Mexico
Rodey Theatre

Section - scene 1

Scale: 1/2"=1'-0"

Date: Feb, 17, 2025



S.D. 13829
SCENIC DESIGNER
SIGNATURE *Inseung Park*

- 0 - Fire Curtain
- 1 - Border Leg
- 2 - Grand Curtain
- 3 - Movie Screen
- Winch 1 - 1st Electric
- 4 -
- 5 -
- 6 - Border #2
- 7 - Legs #2
- 8 - Track storage
- 9 -
- 10 - 2nd Elec
- 11 -
- 12 -
- 13 - Border #3
- 14 - Legs #3
- 15 -
- 16 - 3rd Elec
- 17 -
- 18 -
- 19 - Border #4
- Legs #4
- Winch 2 - 4th Elec
- 21 -
- 22 - Black Trav
- 23 - Leg #5
- 24 - black scrim
- 25 -
- 26 - RP screen
- 27 -
- 28 - 5th Elec

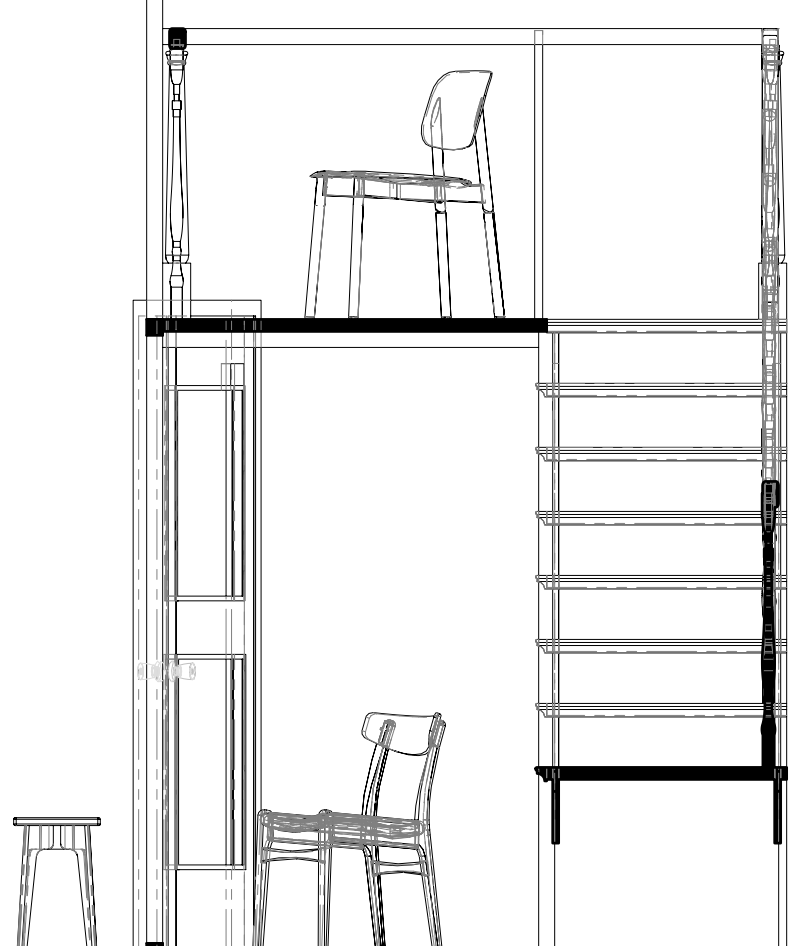
PIN RAIL / CATWALK

Hole in Catwalk

Steel Ladder

Projection Bridge

Spiral Staircase to Fly Rail



TRAPS AND STEEL I-BEAMS

Stage Level

Musician Exit SL Only
--- SR Storage

Orchestra Level

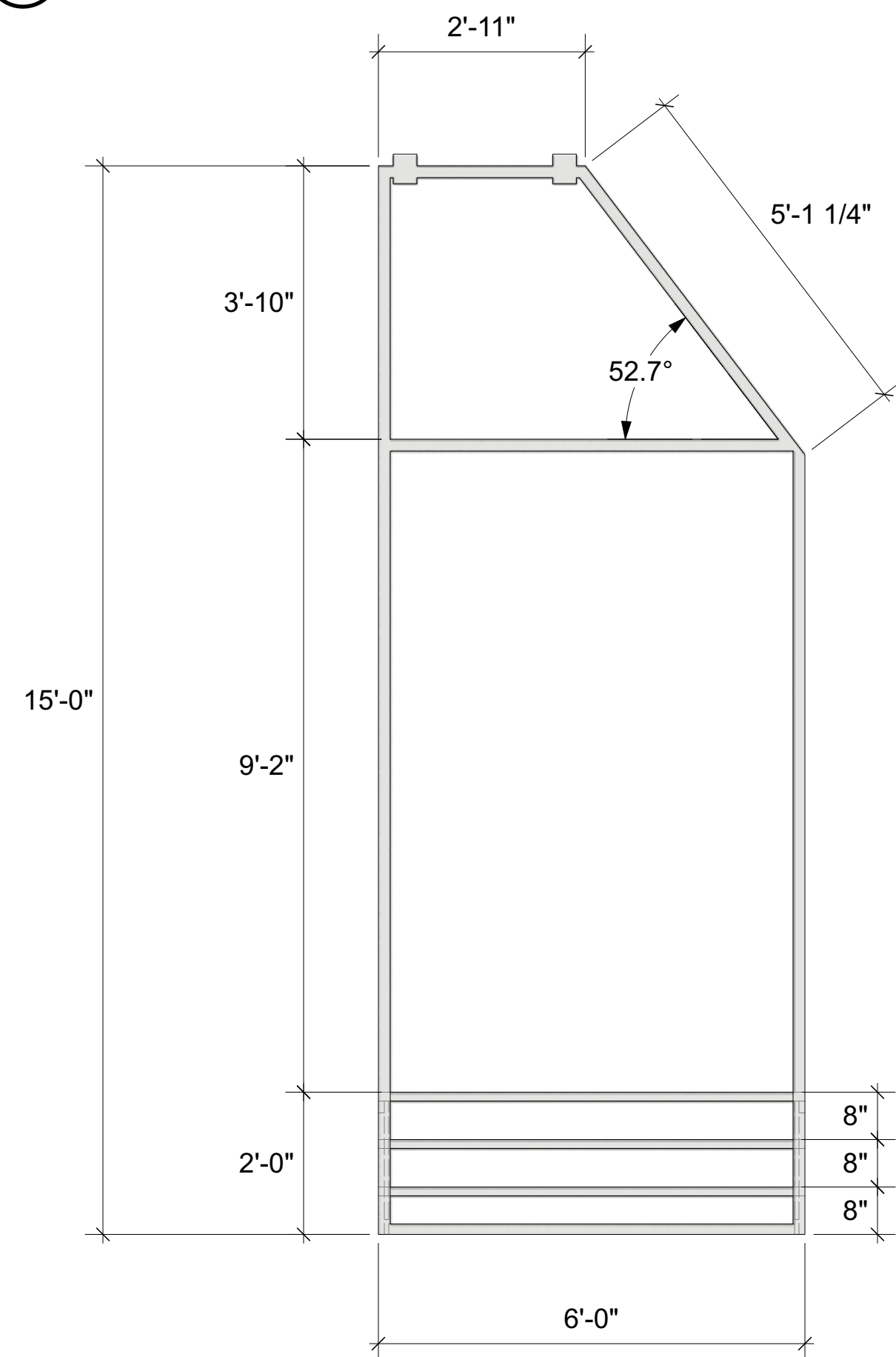
Trap Room Level

Seating Bank Lift In Proscenium (Up Configuration)

Rodey Theatre

Section View: Stage Right

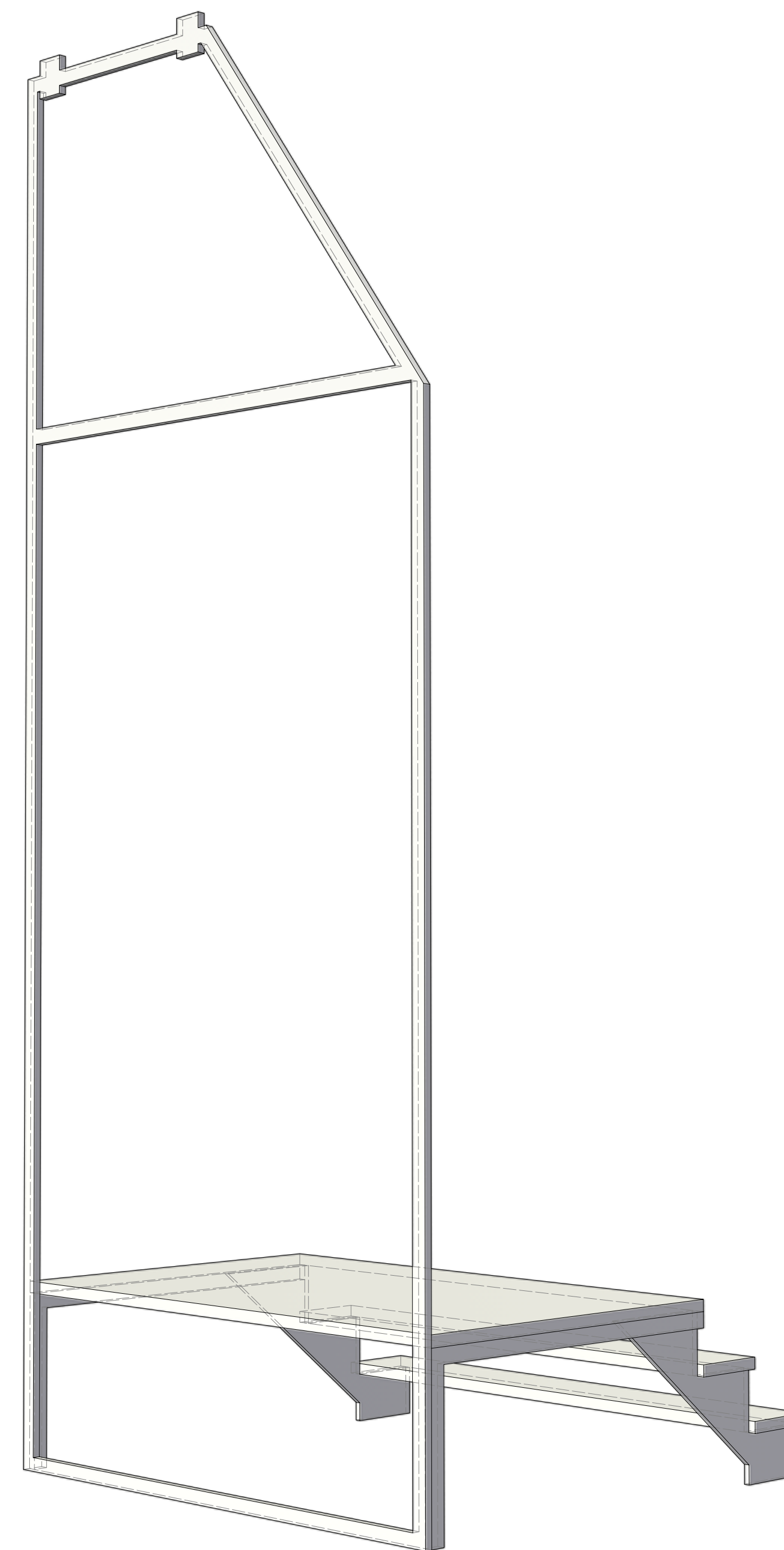
B-1 Ghost Level: front



B-3 Ghost Level: section
scale: 1"=1'-0"



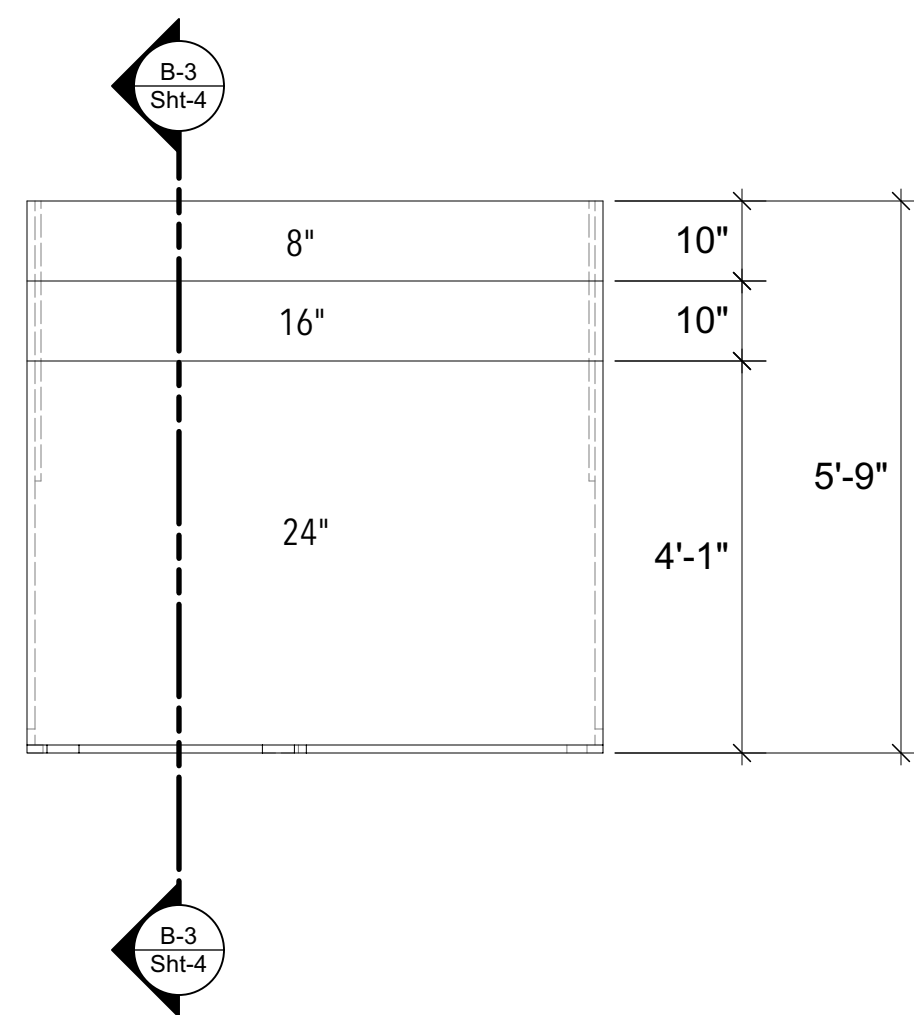
B-4 Ghost Level: perspective



Reference for balcony unit stairs



B-2 Ghost Level: plan



NOTE:

- The frames of the houses are gold.
- All wood stairs and handrails for the balcony unit are rustic oak. See reference.
- The pendulum clock is also rustic or light oak.



Ghost Sonata
by August Strindberg

Directing: Alejandro Rodriguez
 Costume: Sydney Liotta
 Lighting: Bill Liotta
 Sound: Bill Liotta
 Prop/scenic charge: Mattie Roos
 Technical Directing: Jeff Taylor
 Assistant tech directing: Alex Houston
 Scenic: Inseung Park
 Assistant Scenic: Kay Burley
 Drafting: Inseung Park

University of New Mexico
 Rodey Theatre

Ghost Level

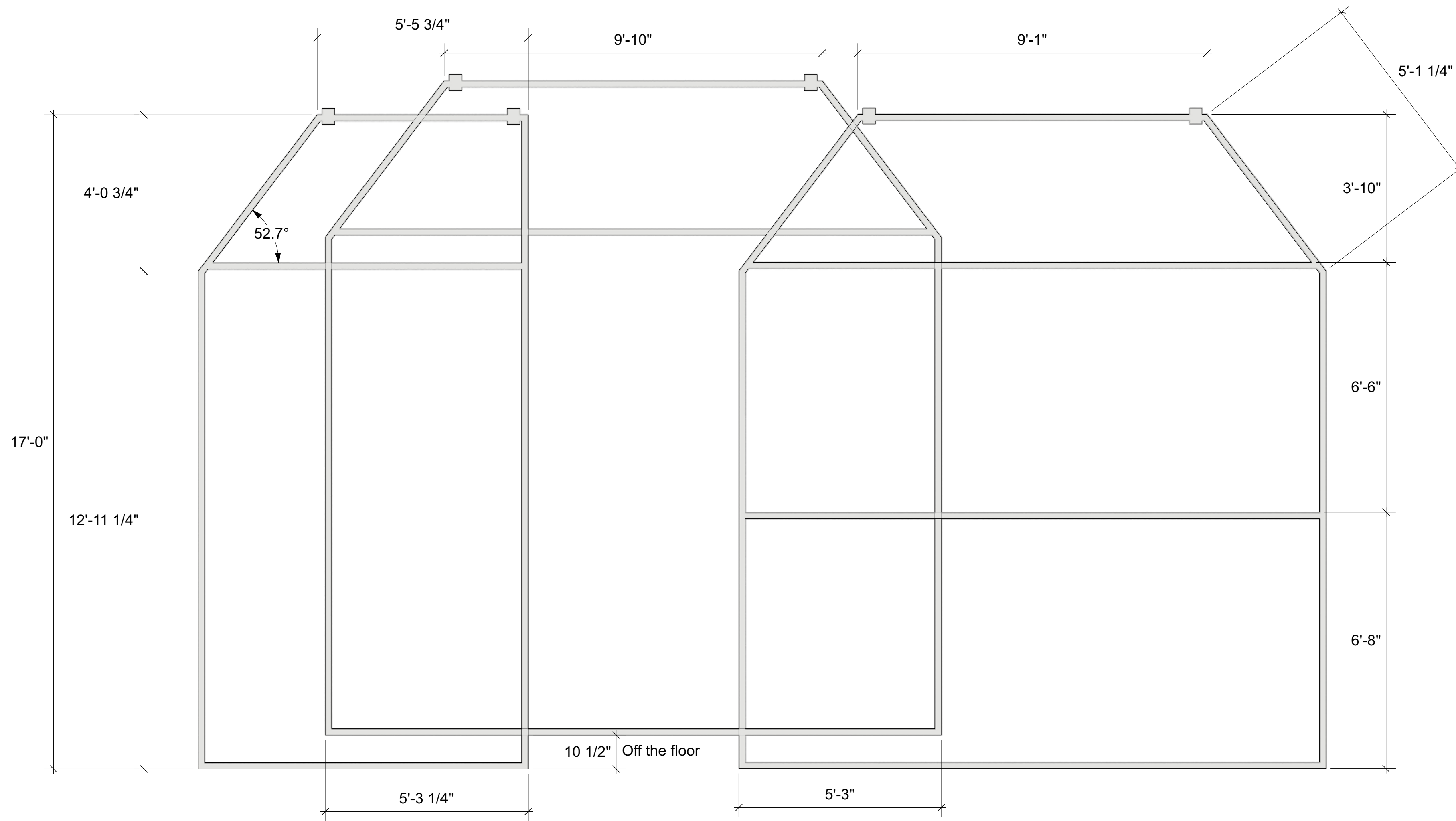
Scale: 1/2"=1'-0"

Date: Feb, 17, 2025

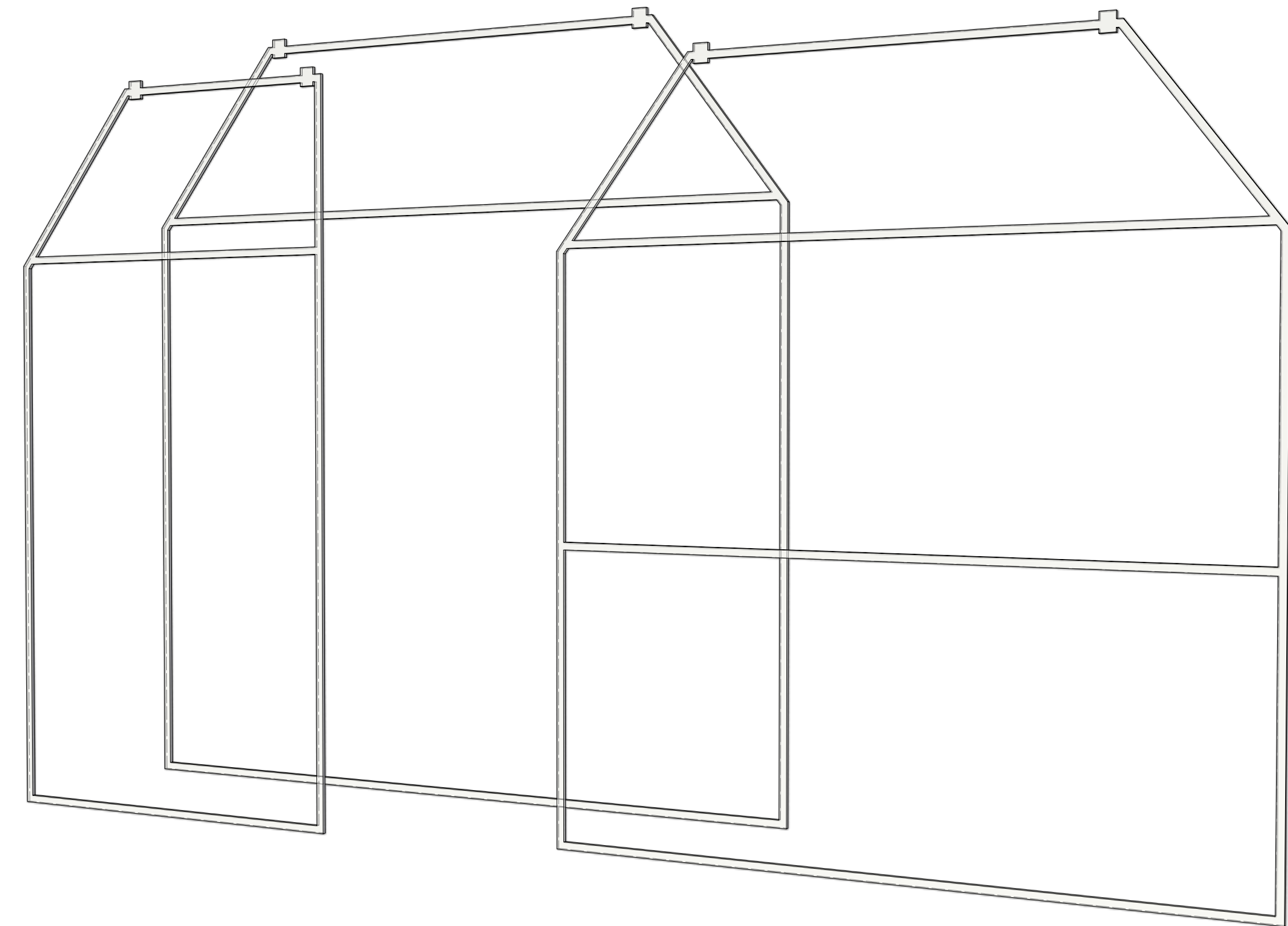


S.D. 13829
 SCENIC DESIGNER
 SIGNATURE: *[Signature]*

C-1 Ghost Houses: front



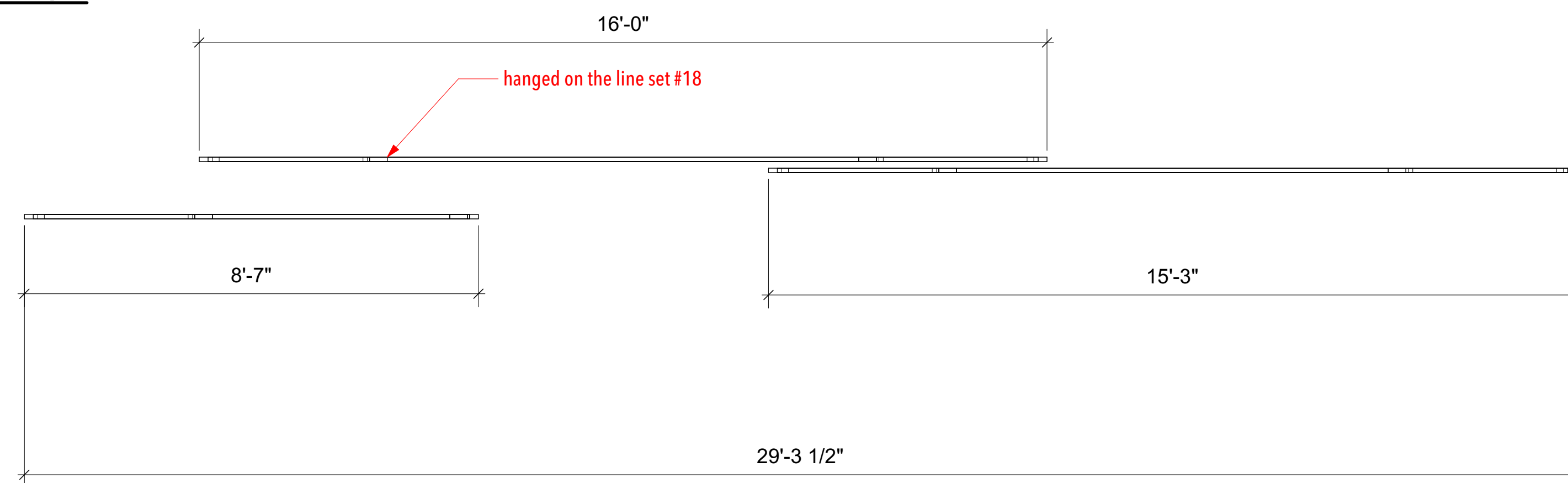
C-3 Ghost Houses: perspective



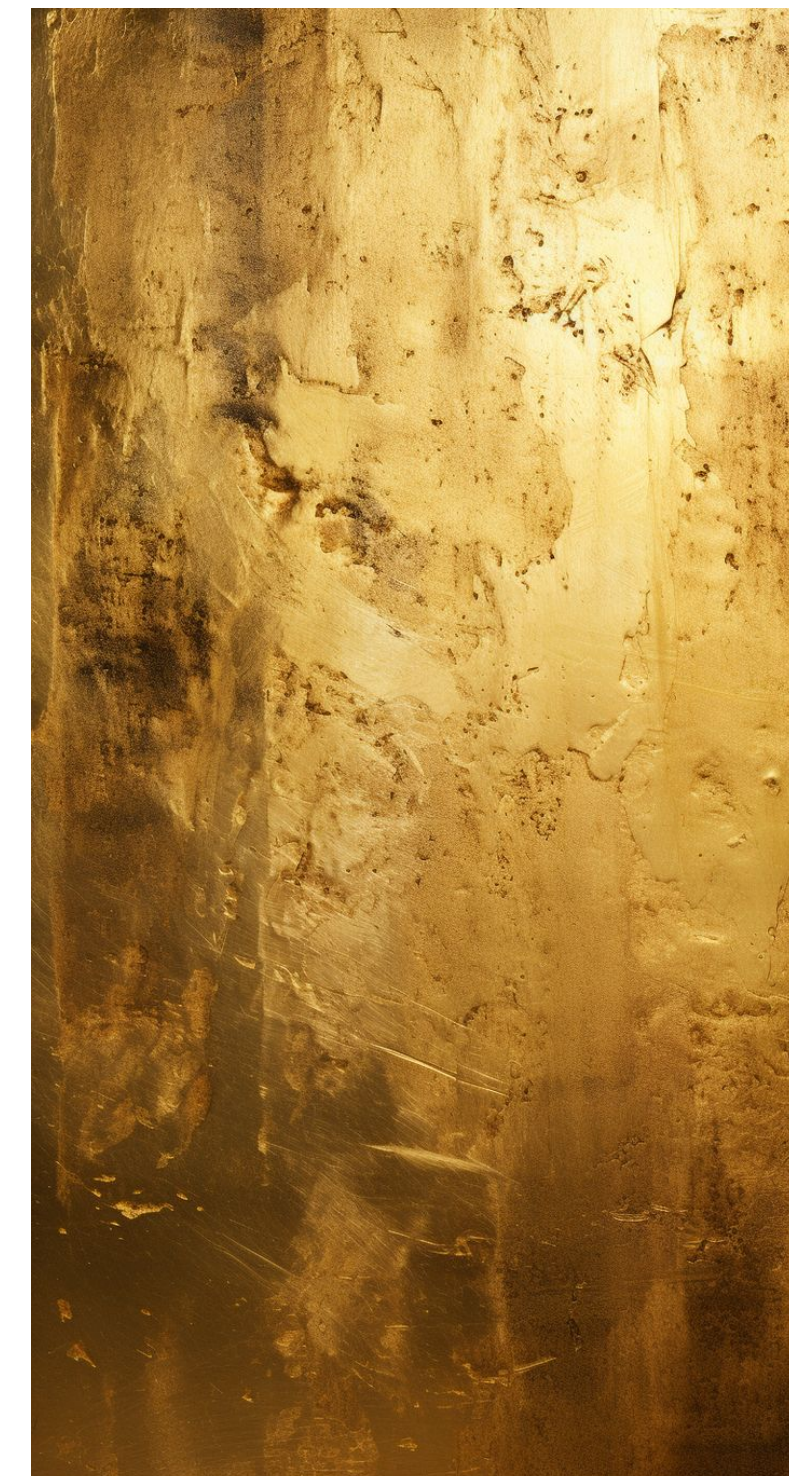
NOTE:

- All frames of the houses are 1"x2" steel tube.
- All frames of the houses are painted in richly textured grunge gold. See reference below.

C-2 Ghost Houses: plan



Reference for ghost houses color scheme



Reference for ghost house silhouette



Ghost Sonata
by August Strindberg

Directing: Alejandro Rodriguez
 Costume: Sydney Liotta
 Lighting: Bill Liotta
 Sound: Bill Liotta
 Prop/scenic charge: Mattie Roos
 Technical Directing: Jeff Taylor
 Assistant tech directing: Alex Houston
 Scenic: Inseung Park
 Assistant Scenic: Kay Burley
 Drafting: Inseung Park

University of New Mexico
 Rodey Theatre

Ghost Houses

Scale: 1/2"=1'-0"

Date: Feb, 17, 2025



S.D. 13829
 SCENIC DESIGNER
 SIGNATURE: *[Signature]*